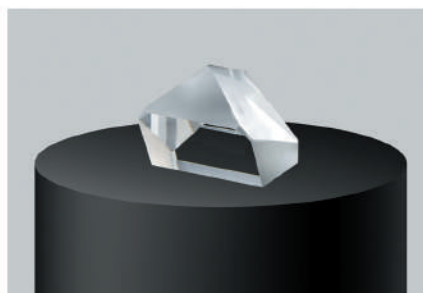
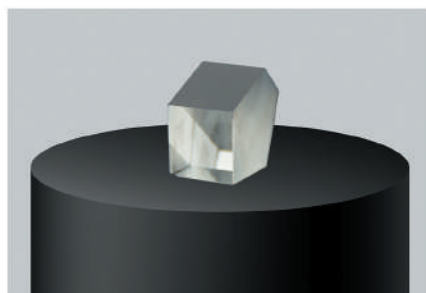


## Product Introduction

A prism is a transparent optical element with flat, polished surfaces that refract light. At least two of the flat surfaces must have an angle between them. The exact angles between the surfaces depend on the application.

ECOPTIK focus on a variety of custom processing, using visible material, ultraviolet material, and infrared materials. Mainly provide customized right angle prism, wedge prism, roof prism, pyramid prism, penta prism, anamorphic prism, rhomboid prism, powell prism, dove prism and kinds of light guide pipes.



## Specification

Item	Commercial	HighPrecision
Material	Optical glasses, fused silica, silica, etc.	
Dimension	1mm-150mm	
Dimension tolerance	±0.1mm	±0.03mm
Angle tolerance	<3 arc min	<30 arc sec.
Clear Aperture	>90% of diameter	
Surface Quality	MIL60-40	MIL20-10, 10-5
Surface flatness	$\lambda/4@632.8\text{nm}$	$\lambda/10@632.8\text{nm}$
Chamfer	0.05~0.2mm x 45°	
Coating	As per the customers' request	

